

WHS

www.w-h-s.fi

WHS &  
PICHET KLUNGLUN  
DANCE COMPANY.  
BIRD

**WHS & Pichet Klunchun Dance Company:**

# **BIRD**

Contact:

WHS

WHS

Unioninkatu 45 LH 1-2, 00170 Helsinki, Finland

Tel. +358 50 339 8598 / +358 50 370 5123

[contact@w-h-s.fi](mailto:contact@w-h-s.fi)

[www.w-h-s.fi](http://www.w-h-s.fi)

Pichet Klunchun Dance Company

700 Prachauthit 59, Rajburana, Thungkru, Bangkok 10140,

Thailand

Tel. +66 92 694 9997 / +66 93 545 1598

[sojirats@yahoo.com](mailto:sojirats@yahoo.com)

[www.pkdancecompany.com](http://www.pkdancecompany.com)

# WHS & Pichet Klunchun Dance Company:

## BIRD

Director: Ville Walo

Choreographer: Pichet Klunchun

Music: Lau Nau

Music production & mixing: Lau Nau & Samuli Tanner

Lighting design: Eero Alava

Set & costume design: Anne Jämsä

Costume assistant: Piyaporn Bhongse-tong

Performers: Julaluck Eakwattanapun, Sunon Wachirawarakarn, Padung Jumpan, Pavida Watchirapanyaporn

Photographer: Siriwan Pakmei

Production: WHS & Pichet Klunchun Dance Company

Supported by: Kone Foundation, Finnish Cultural Foundation

Thanks to: Porramet Maneerat

Duration: approx. 60 minutes

Premiere: in Bangkok 2018

Bird was created in artistic collaboration between visual theater company WHS from Finland and Pichet Klunchun Dance Company.

**WHS & Pichet Klunchun Dance Company:**

## **BIRD**

The performance keeps the sky as its prisoner, and teaches fake birds to fly.

Doves of peace clash with humans, as species and cultures mix together. Birds are brought on stage by the means of contrasting Asian and European performance traditions. Human society is approached in the performance from the perspective of birds. In a bird's eye view of society, all humans appear similar, despite of their cultural and social differences.

We think our homes are as safe as a bird's nest, closed off from threats luring on the streets of a city. Countries close their borders hoping to create a safe nest for their citizen's, but are we really inside or outside of the pretty little birdcage. The cage may become a prison with high security guards on all exits and entry doors.

On stage the audience will see the performers confined in a birdcage. Liberating birds from a cage and letting them fly freely is thought to be a good deed in many cultures around the world. But for some people to set birds free, someone is taking them captive. Or is it perhaps the audience that is in a cage?

*We wish to make this known to you. If anyone  
is keeping birds in cages in your courtyards,  
we tell you, "Let them go." If you don't obey,  
you, in your turn, will be arrested by the birds,  
tied up and forced to work as decoys where we live.*

*Aristophanes: Birds (414 BCE)  
(Translated by Ian Johnston)*

**Premiere on 10<sup>th</sup> of November 2018 in Chang Theatre, Bangkok,  
Thailand.**

# Pichet Klunchun

Pichet Klunchun bridges traditional Thai Classical Dance language with contemporary sensibility, while keeping the heart and wisdom of the convention. Over the past 10 years, he has earned domestic notoriety for his efforts in contemporizing Khon and has participated lately in several intercultural performing arts programs as an international dancer-choreographer represented Thailand in Asia, North America and Europe.

In 2008, Pichet has received many honorary awards such as 'Routes' ECF Princess Margriet Award for Cultural Diversity from European Cultural Foundation. The purpose of the award is to honor artists and thinkers in the field of cultural diversity for helping to combat fear and disrespect of 'the other'. In 2012, he received the "Chevalier of the French Arts and Literature Order" from the French Ministry of Culture for his contribution to the influence of Culture in France, in Thailand and all over the world. In 2014, Pichet was awarded the John D. Rockefeller 3rd Award by the Asian Cultural Council for a significant contribution to the international understanding, practice, or study of the visual or performing arts of Asia.

# Ville Walo

Ville Walo is a pioneer of Finnish contemporary circus, and his company WHS is one of the most internationally active performing arts groups in Finland. Walo has performed in nearly 40 countries in numerous circus, theatre, dance and puppetry venues and festivals around the world. Walo is renown for his original juggling style that balances on the boundary surfaces between juggling, puppet theatre and dance. He has expanded the expression range of circus towards visual theatre and object theatre. Walo has received several awards and artistic grants from Arts promotion Centre Finland, Finnish Cultural Foundation, Niilo Helander Foundation, Helsinki City and National Council for Interdisciplinary Art, Diversity and International Activities.

# WHS

WHS is a contemporary circus / visual theatre group from Finland, formed by magician Kalle Nio, juggler Ville Walo and set & costume designer Anne Jämsä. The productions of the group have been the propelling force behind the rapid rise to fame of Finnish contemporary circus in the past decade. In the performances of the group circus has become a modern, independent and constantly changing form of expression that other arts, video in particular, complement. In the press the performances have been called avant-garde also in the larger contexts of theatre and art in general. The performances have been on the sharp edge of the latest developments of theatre as well as circus.

The circus group has grown known for the juggling style of Walo that balances on the boundary surfaces between juggling and puppetry, and the scale of expression of Nio that reaches from visual arts to magic. The group has taken their performances across more than 40 countries,

visiting well over a hundred world- famous festivals, circuses, theatres and puppet theatres in Europe, Asia, South America and North America.

**Lau Nau** aka Laura Naukkarinen, is one of the more interesting names in the contemporary music scene in Finland. Her songs are imbued with a cinematic breadth of vision and her idiosyncratic, finely honed sound world builds on fragile, spectral otherness. She works using both acoustic and electronic instruments, from field recordings to analogue synthesizers, from vocals and traditional instruments to musique concrete and found objects.

**Anne Jämsä** is a costume and set designer and a founding member of Finnish visual theatre and contemporary circus company WHS. She is interested in developing visually expressive ways of using objects on stage. She has designed costumes, props and sets especially for dance, circus and visual theatre productions. She has a Master's degree in Scenography and a Bachelor's degree in History.

**Eero Alava** is a freelance lighting engineer and designer. He has studied lighting design at Tampere Polytechnic. Eero Alava has worked as a technician, designer and photographer for dance, music and circus performances.

Technical Rider – February 2019

PLEASE CONTACT US FOR QUESTIONS / ADAPTATIONS [technic@w-h-s.fi](mailto:technic@w-h-s.fi)

## BIRD

### STAFF ON TOUR

4 performers, 2 technicians, 1 choreographer / tour manager

### STAGE

Dimensions required

Height: 6 meters minimum

Width: 16 meters (10 meters minimum between side curtains)

Depth: 12 meters (10 meters minimum to back wall or curtain)

No more than 1% tilt of floor

### Stage masking

- black curtains that cover back wall, or a dark coloured back wall
- black curtain legs for side wings (5 on each sides)
- black dance carpets

### RIGGING POINT

300kg stable rigging point for metal cage in centre stage ceiling, height minimum 6m

Weight of metal cage (supplied by company) is approximately 50 kg  
+ weight of electric rope hoist (supplied by venue)

### SET

The set is composed of various accessories:

1) Suspended metal cage cupola over stage equipped with LED lights. It is lowered and lifted with an electric rope hoist rigged above stage.

A black electric cable and a black Ethernet cable go up from the cage cupola to pulleys rigged above the stage, approx. 60 cm to stage right from the electric hoist. The two cables run trough at least two climbing pulleys each to either FOH or stage right side wing. They come down in FOH or in stage right wing, and are held in place with a stage weight.

The electric rope hoist and the cables are operated from FOH control booth or stage right wing to lower and lift the cage cupola during the performance.

2) On stage floor: a metal ring, diameter approx. 3,65m

3) In upstage left wing: 4 metal fences, approx 2m x 1m each (leaning on the wall or some other support)

All of these accessories (excluding the electric ropehoist, cables pulleys, stage weights, climbing pulleys and gaffer tape) are supplied by the company.

For the set the venue needs to provide:

- Electric ropehoist with metal wire, maximum load 300 kg, s3 20% 10min, 1150W, cable diameter 4,5mm, tensile strength 1960MPa, rigged above stage center, operated from FOH or stage right wing
- 1 roll (25 m) of matte black gaffer tape (width 5 cm)
- 2 rolls of white paper tape (width 5 cm)
- 2 rolls of white paper tape (width approx. 2 cm)
- 1 stage weight (size approx. 25x15x10cm, weight minimum 1kg)
- Black electricity schuko cable for the cage cupola LEDs, length: 2 x stage height + distance of ropehoist rigging point from FOH or stage right wing
- Black ethernet cable for the cage cupola LEDs, length: 2 x stage height + distance of ropehoist rigging point from FOH or stage right wing
- Minimum 4 premium quality climbing pulleys or two double pulleys for the cables, must run smoothly

## LIGHTING

Led-lights are controlled on Enttec Pixelator Mini with max 20VA power via European standard shuko and an Ethernet cable with Art-Net. It is located mid stage on cage cupola.

- GrandMa2 light or similar light desk with cue recording option and Art-Net.
- 33 dimmer channels with 2kW per channel. Not including audience lights.

Lights will be rigged on 6 lighting bars on 7 meters height preferred.

Venue needs to provide:

- 8 floorstands for profiles on 0.30m height
- 1 floorstand/boom for Par on 2,5m height

Lanterns the venue needs to provide:

- 8 x Profile 50dec 750W with shutters
- 9 x Profile 26dec 750W with shutters
- 7 x ETC S4 Par or similar on medium lens
- 8 x 1kW Fresnel with barndoors
- 2 x 1kW Flood/Cyclorama

Light contact:

Eero Alava

eero.alava@gmail.com



## SOUND SYSTEM

- Sound Desk with 2 input channels
- Sound is coming from single Apple laptop computer located in FOH, next to light control desk
- 2 mono jack cables to connect the computer to the sound desk
- 2 DI-boxes
- PA: about 2x1kw per 300 people
- Sufficient stage monitoring
- Professional standard CD-player (sound testing and back-up)

## DRESSING ROOMS

- Minimum 2 dressing rooms with showers (near the place of performance, heated if necessary, well lit, lockable or guarded, with chairs, a mirror, a WC)
- Bottles of water (minimum 10 small bottles for each performance)
- catering: bananas and other fruits, coke, water, fruit juice, coffee, chocolate, sandwiches or snacks for 2 persons during set-up, and for 7 persons 3 hours before performance
- 4 towels
- hangers (16) for clothes
- ironing board and iron

## ACCOMMODATION

Accommodation and board for 7 people on the days of set up and performance

- 7 hotel rooms: 7 single rooms, min. 2 stars

## TECHNICAL STAFF

Putting up the sets takes approximately 10 hours (minimum 8 working hours excluding breaks) and requires:

- 2 lighting technicians (3 if light has not been prepared before we arrive)
- 1 sound technician
- 1 stage technician

During the show

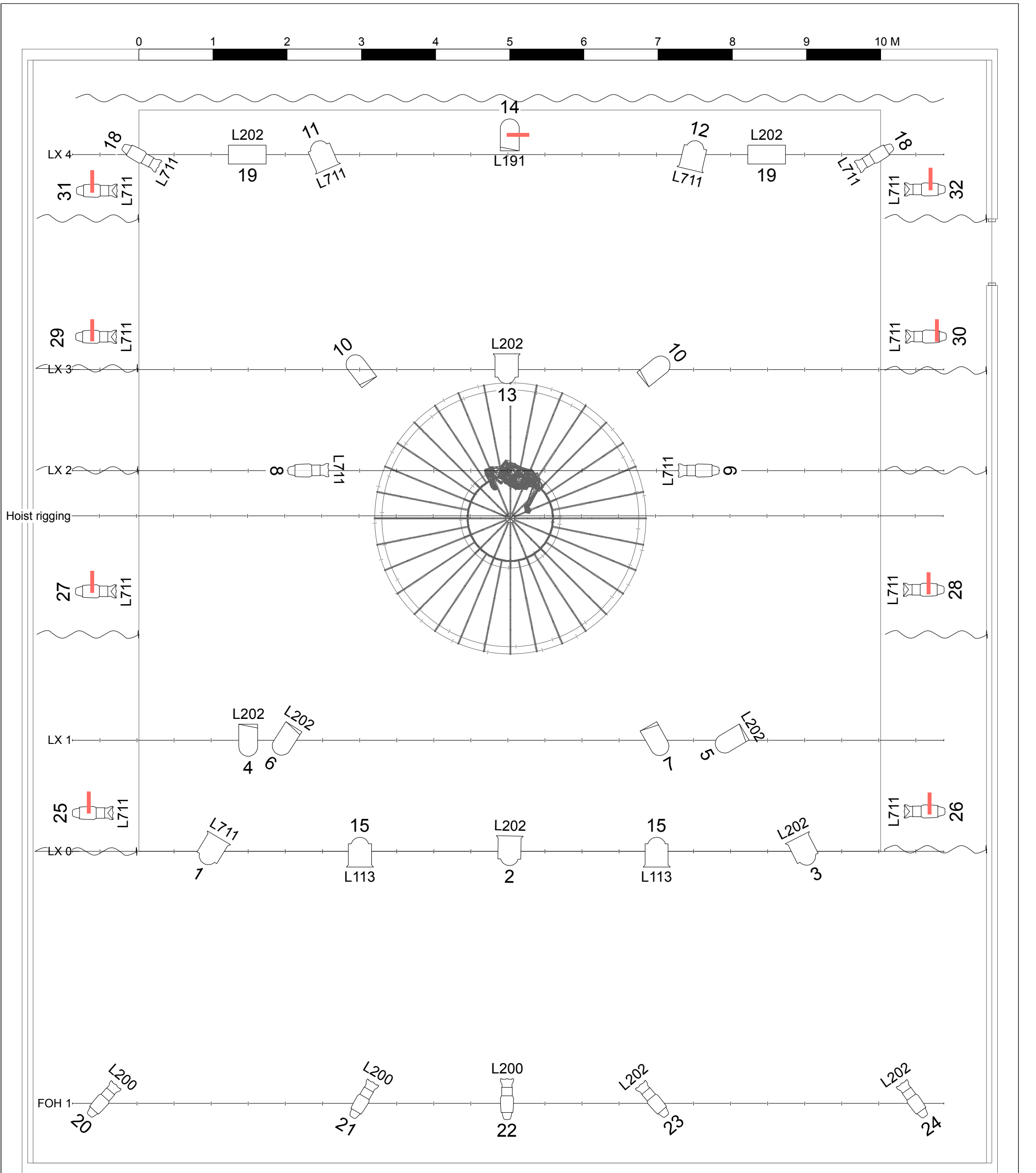
- 1 sound technician / house technician familiar with venue

Duration of show: approx. 60 minutes

Strike down of the equipment brought by the company takes approximately 3 hours.

The technical needs can be adjusted to fit in the venue's specifications so if anything needs to be clarified or any questions appear, please do not hesitate to contact us.

Technical contact: [technic@w-h-s.fi](mailto:technic@w-h-s.fi)



Stands on floor (7)

Light

	Profile 50° 750W with shutters	8
	Profile 26° 750W with shutters	9
	ETC S4 PAR 575W medium	7
	1kW Fresnel with Barndoors	8
	1kW Flood/Cyclorama	2

1

A3: Bird @ Chang Theatre  
Scale: 1:50

Show Name

WHS & Pichet Klunchun Dance Company: Bird

Venue  
Generic stage

Drawn By  
Eero Alava

Date  
16.1.2019

	A	B	C	D	E	F
1	<b>Bird-Channels</b>					
2						
3						
4	Channel	Instrument Type	Wattage	Focus	Purpose	Color
5	1	1kW Fesnel with Barndoors	1000W	frontSR	Front stage right top	L711
6	2	1kW Fesnel with Barndoors	1000W	Cfront	Front top	L202
7	3	1kW Fesnel with Barndoors	1000W	frontSL	Front stage left top	L202
8	4	ETC S4 PAR 575W medium	575W	dieF	Death spot	L202
9	5	ETC S4 PAR 575W medium	575W	frontSL	Solo spot	L202
10	6	ETC S4 PAR 575W medium	575W	bird	New bird spot	L202
11	7	ETC S4 PAR 575W medium	575W	cent	Front to cage	
12	8	Profile 26° 750W with shutters	750W	cent	Cage Top	L711
13	9	Profile 26° 750W with shutters	750W	cent	Cage Top	L711
14	10	ETC S4 PAR 575W medium	575W	cent	Warm cage	
15		ETC S4 PAR 575W medium	575W	cent	Warm cage	
16	11	1kW Fesnel with Barndoors	1000W	dig1	Diagonal upstage SR	L711
17	12	1kW Fesnel with Barndoors	1000W	dig2	Diagonal upstage SL	L711
18	13	1kW Fesnel with Barndoors	1000W	cback	Back top	L202
19	14	ETC S4 PAR 575W medium	575W	cent	Lower warm back	L191
20	15	1kW Fesnel with Barndoors	1000W	audience2	Audience	L113
21		1kW Fesnel with Barndoors	1000W	audience1	Audience	L113
22	18	Profile 26° 750W with shutters	750W	side4	Back corridor	L711
23		Profile 26° 750W with shutters	750W	side4	Back corridor	L711
24	19	1kW Flood/Cyclorama	1000W	wall2	Walls	L202
25		1kW Flood/Cyclorama	1000W	wall1	Walls	L202
26	20	Profile 26° 750W with shutters	750W	frontSR	Front left	L200
27	21	Profile 26° 750W with shutters	750W	frontSR	Front left	L200
28	22	Profile 26° 750W with shutters	750W	side1	Front mid	L200
29	23	Profile 26° 750W with shutters	750W	frontSL	Front right	L202
30	24	Profile 26° 750W with shutters	750W	frontSL	Front right	L202
31	25	Profile 50° 750W with shutters	750W	side1	Sidelights	L711
32	26	Profile 50° 750W with shutters	750W	side1	Sidelights	L711
33	27	Profile 50° 750W with shutters	750W	side2	Sidelights	L711
34	28	Profile 50° 750W with shutters	750W	side2	Sidelights	L711
35	29	Profile 50° 750W with shutters	750W	side3	Sidelights	L711
36	30	Profile 50° 750W with shutters	750W	side3	Sidelights	L711
37	31	Profile 50° 750W with shutters	750W	side4	Sidelights	L711
38	32	Profile 50° 750W with shutters	750W	side4	Sidelights	L711
39						

	A	B	C	D	E
1	<b>Bird-Colors</b>				
2					
3					
4	Color	Channel	Instrument Type	Position	Frame Size
5		10	ETC S4 PAR 575W medium	LX 3	190mm
6		10	ETC S4 PAR 575W medium	LX 3	190mm
7		7	ETC S4 PAR 575W medium	LX 1	190mm
8	L113	15	1kW Fesnel with Barndoors	LX 0	254mm
9		15	1kW Fesnel with Barndoors	LX 0	254mm
10	L191	14	ETC S4 PAR 575W medium	LX 4	190mm
11	L200	20	Profile 26° 750W with shutters	FOH 1	159mm
12		21	Profile 26° 750W with shutters	FOH 1	159mm
13		22	Profile 26° 750W with shutters	FOH 1	159mm
14	L202	13	1kW Fesnel with Barndoors	LX 3	254mm
15		19	1kW Flood/Cyclorama	LX 4	507mm
16		19	1kW Flood/Cyclorama	LX 4	507mm
17		2	1kW Fesnel with Barndoors	LX 0	254mm
18		23	Profile 26° 750W with shutters	FOH 1	159mm
19		24	Profile 26° 750W with shutters	FOH 1	159mm
20		3	1kW Fesnel with Barndoors	LX 0	254mm
21		4	ETC S4 PAR 575W medium	LX 1	190mm
22		5	ETC S4 PAR 575W medium	LX 1	190mm
23		6	ETC S4 PAR 575W medium	LX 1	190mm
24	L711	1	1kW Fesnel with Barndoors	LX 0	254mm
25		11	1kW Fesnel with Barndoors	LX 4	254mm
26		12	1kW Fesnel with Barndoors	LX 4	254mm
27		18	Profile 26° 750W with shutters	LX 4	159mm
28		18	Profile 26° 750W with shutters	LX 4	159mm
29		25	Profile 50° 750W with shutters	Floor stand	159mm
30		26	Profile 50° 750W with shutters	Floor stand	159mm
31		27	Profile 50° 750W with shutters	Floor stand	159mm
32		28	Profile 50° 750W with shutters	Floor stand	159mm
33		29	Profile 50° 750W with shutters	Floor stand	159mm
34		30	Profile 50° 750W with shutters	Floor stand	159mm
35		31	Profile 50° 750W with shutters	Floor stand	159mm
36		32	Profile 50° 750W with shutters	Floor stand	159mm
37		8	Profile 26° 750W with shutters	LX 2	159mm
38		9	Profile 26° 750W with shutters	LX 2	159mm
39					